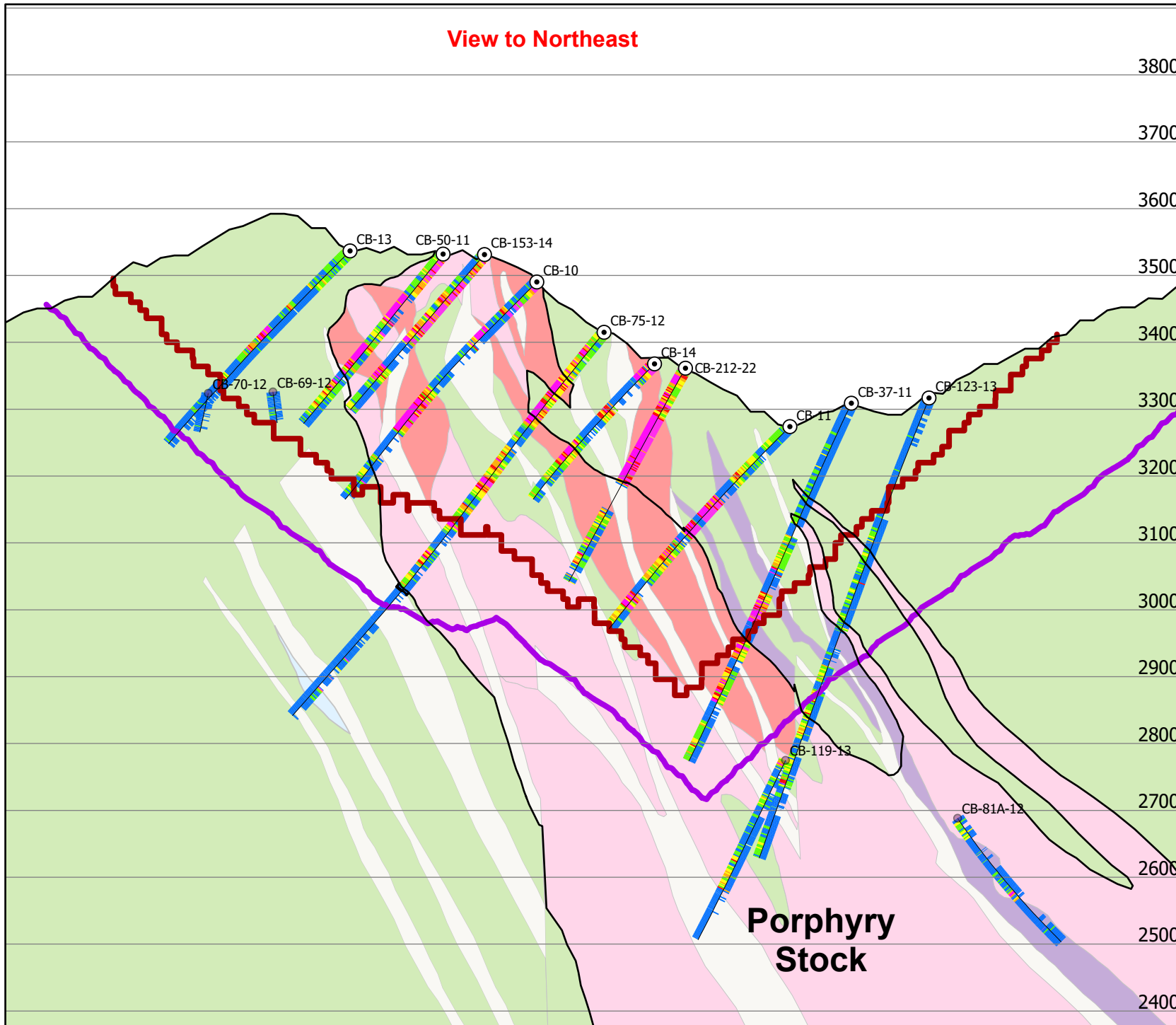


View to Northeast

**NORTH PIT TARGET**



3800  
3700  
3600  
3500  
3400  
3300  
3200  
3100  
3000  
2900  
2800  
2700  
2600  
2500  
2400

**Lithology**

- COV Overburden
- PQZ Quartz Porphyry
- QMP1 Quartz Monzonite Early
- QMP2 Quartz Monzonite Intermineral
- MNZ Monzonite
- LAT Latite
- DIO Diorite
- AND Andesite

**Legend**

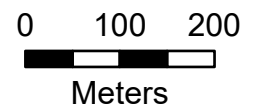
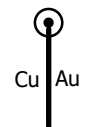
- Drill Hole Executed
- PEA Pit 2015
- Resources Pit (AGP 2023)

**ASSAY\_ddh  
Cu %**

- <0.01
- 0.1-0.2
- 0.2-0.3
- 0.3-0.4
- 0.4-0.5
- > 0.5

**ASSAY\_ddh  
Au g/t**

- <0.01
- 0.1-0.2
- 0.2-0.3
- 0.3-0.4
- 0.4-0.5
- > 0.5



**Porphyry  
Stock**