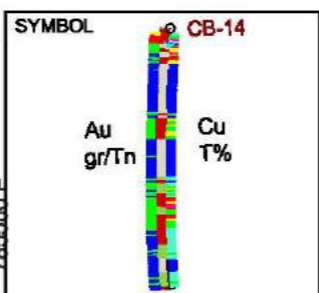
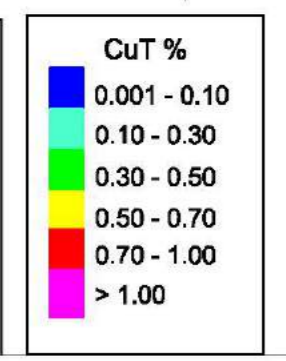
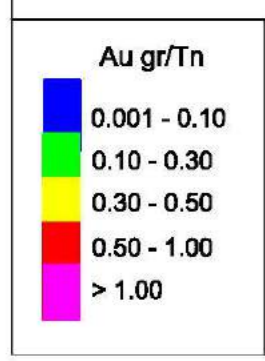
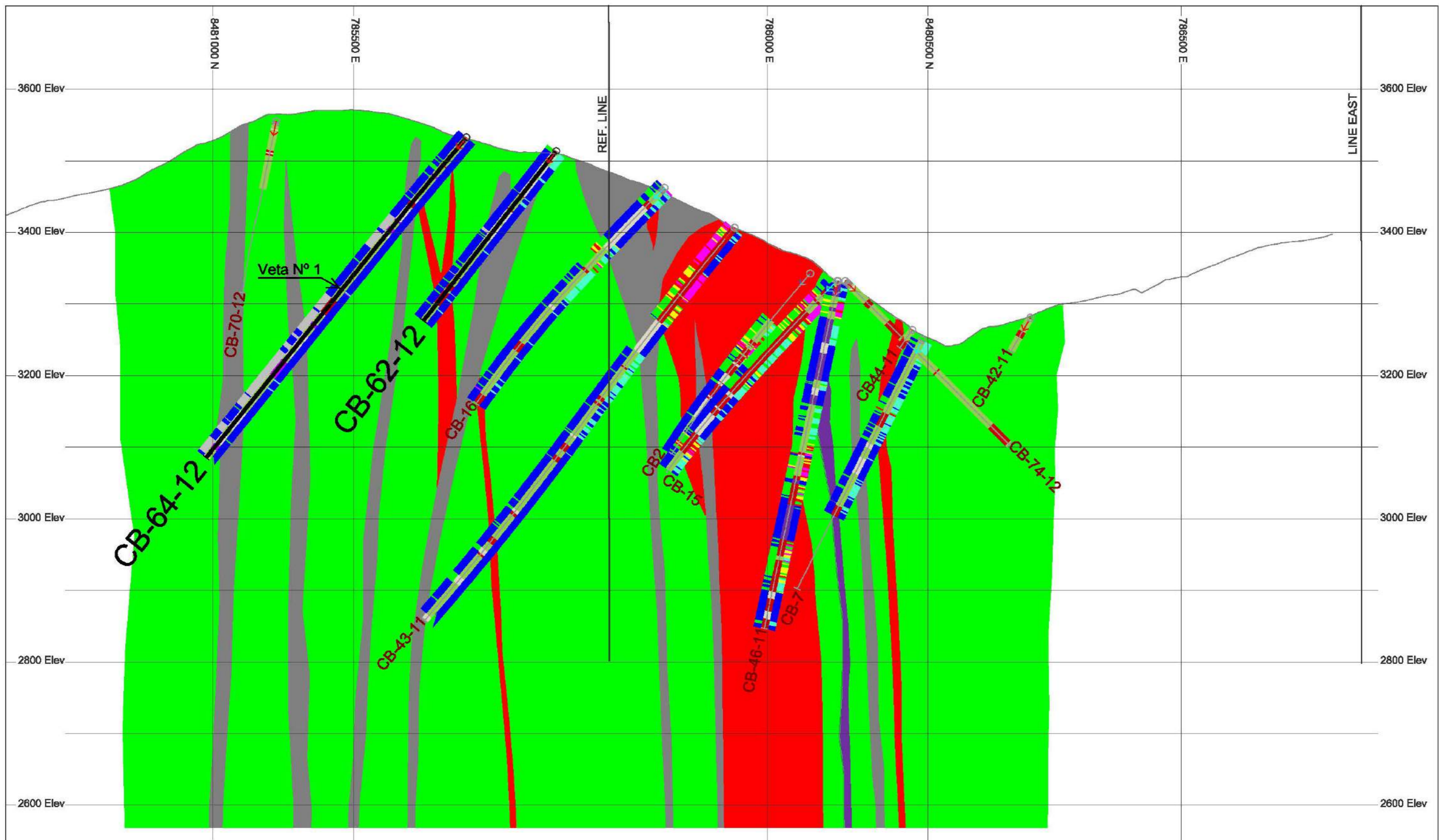


LITHOLOGY

| | |
|-----|----------------------------|
| DIO | Diorite |
| AND | Andesite |
| QMP | Quartz Monzonite Main |
| QMS | Quartz Monzonite Secondary |
| MNZ | Monzonite |
| LAT | Latite |
| GOV | Coluvial |
| CLZ | Limestone |
| GRD | Granodiorite |
| QPZ | Quartz Porphyry |

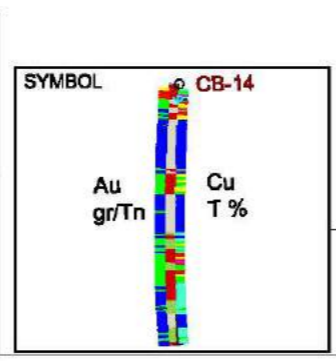


| | | | | | |
|----------------------------------|-----|----------|----------|--------------|----------|
| PANORO APURIMAC S.A. | | | | | |
| COTABAMBAS PROJECT-APURIMAC PERU | | | | | |
| LITHOLOGY SECTION | | | | SHEET | |
| LINE 13E | | | | 28R | |
| CHECK | CAD | Scale | Date: | | Scale |
| | ED | 1:5000.0 | 05/04/12 | | 1:5000.0 |



LITHOLOGY

| | |
|-----|----------------------------|
| DIO | Diorite |
| AND | Andesite |
| QMP | Quartz Monzonite Main |
| QMS | Quartz Monzonite Secondary |
| MNZ | Monzonite |
| LAT | Latite |
| COV | Coluvial |
| CLZ | Limestone |
| GRD | Granodiorite |
| POZ | Quartz Porphyry |

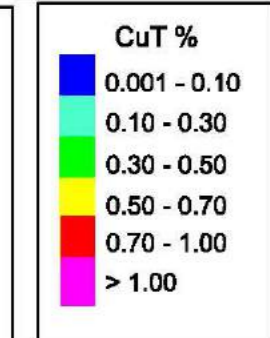
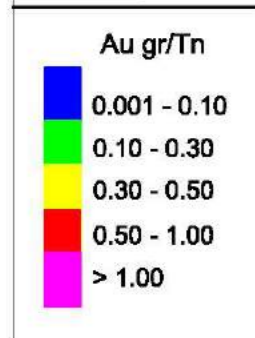
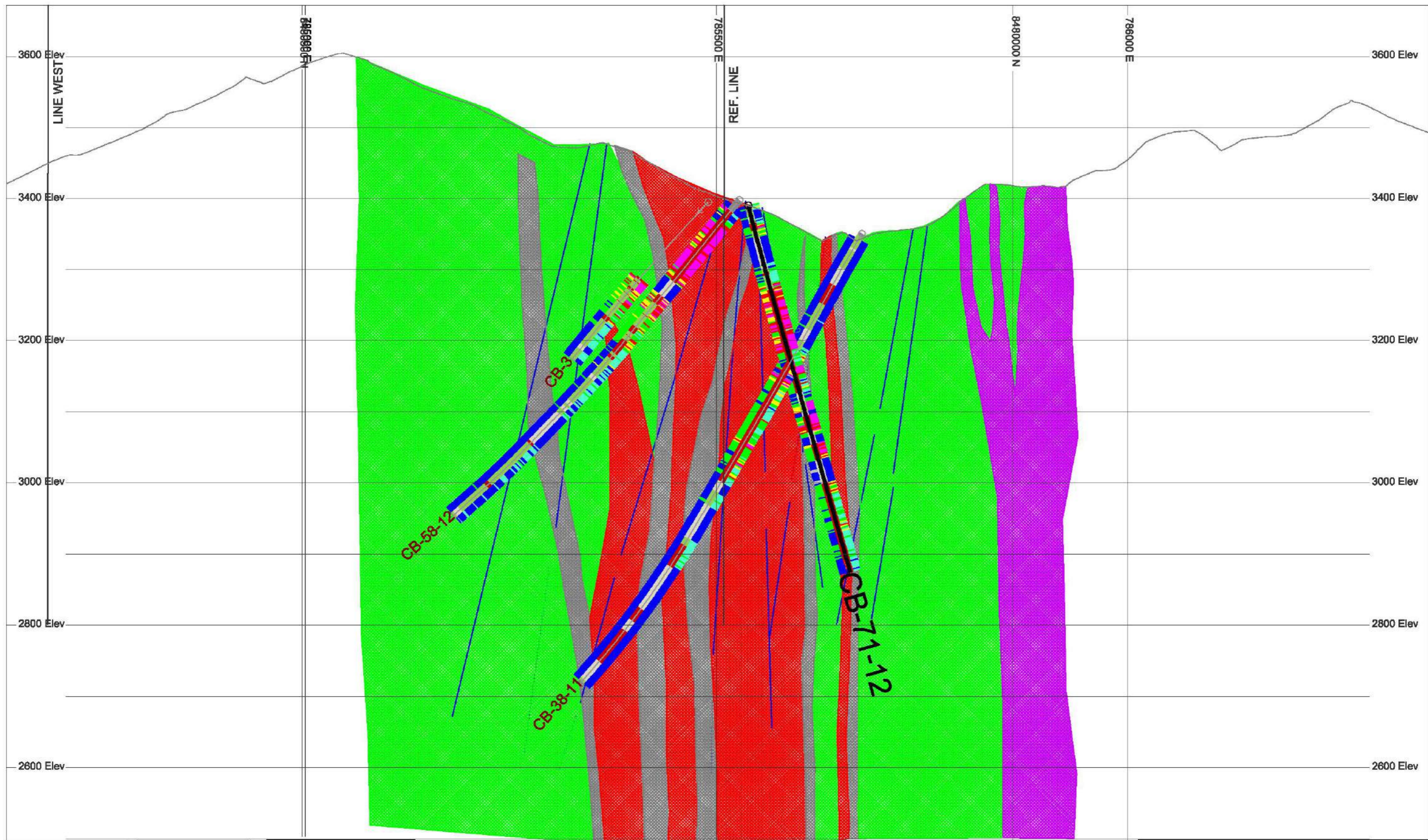


PANORO APURIMAC S.A.

COTABAMBAS PROJECT-APURIMAC PERU

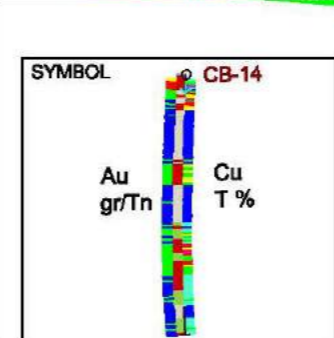
LITHOLOGY SECTION SHEET
LINE 14E 28R

| | | | | |
|-------|-----|----------|----------|----------|
| CHECK | CAD | Scale | Date: | Scale |
| | ED | 1:5000.0 | 05/04/12 | 1:5000.0 |

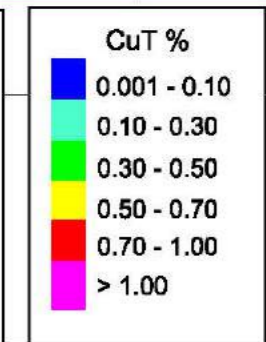
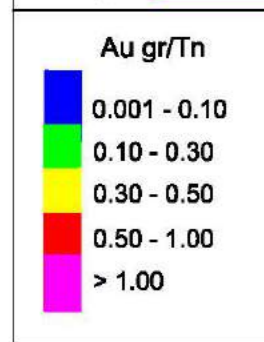
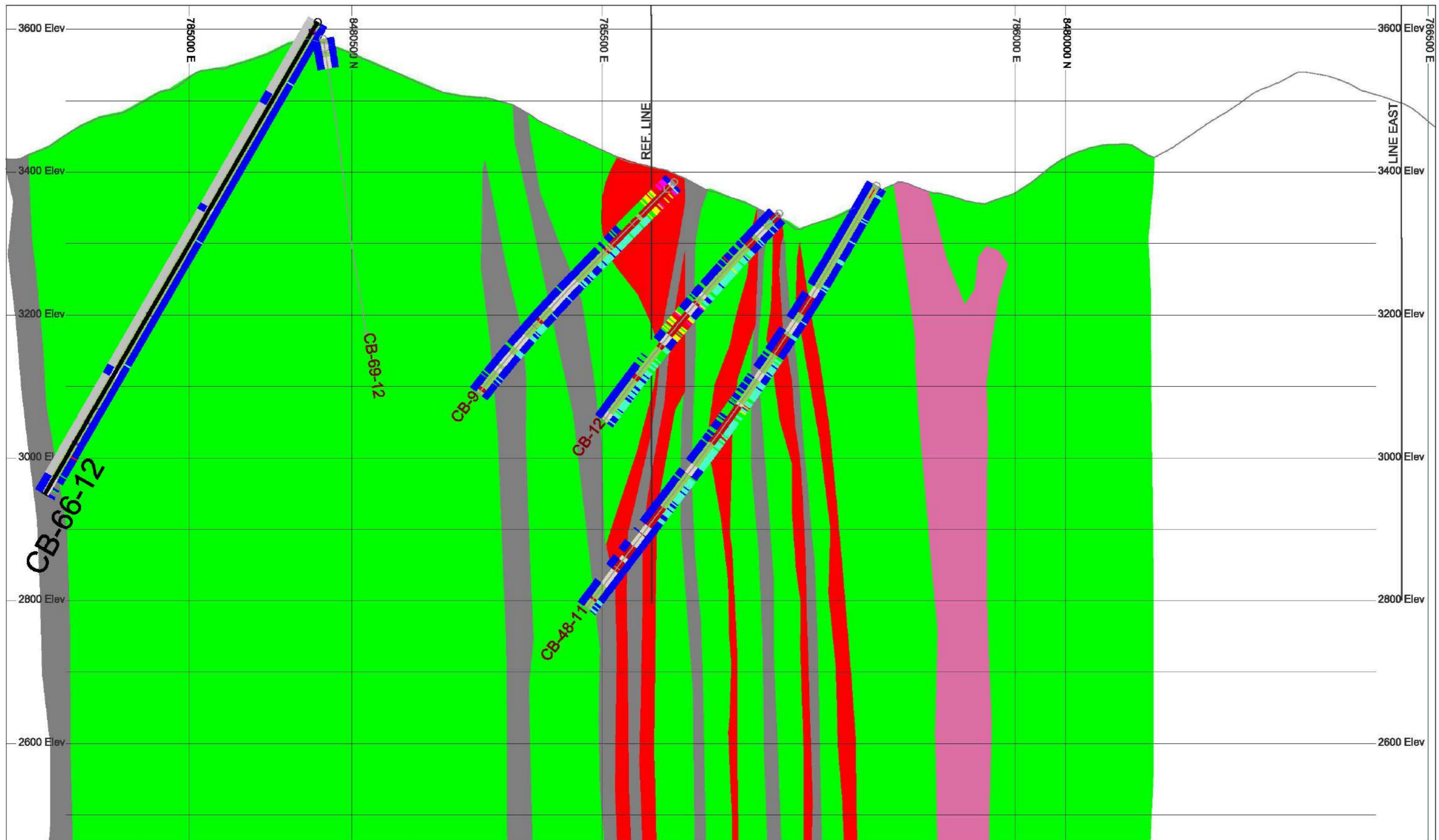


LITHOLOGY

| | |
|-----|----------------------------|
| DIO | Diorite |
| AND | Andesite |
| QMP | Quartz Monzonite Main |
| QMS | Quartz Monzonite Secondary |
| MNZ | Monzonite |
| LAT | Latite |
| COV | Coluvial |
| CLZ | Limestone |
| GRD | Granodiorite |
| QPZ | Quartz Porphyry |

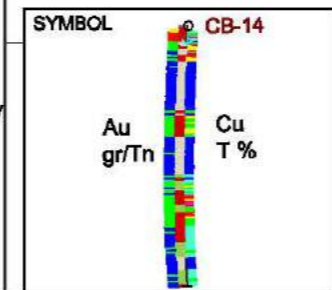


| | | | | | |
|----------------------------------|-----|----------|----------|--------------|----------|
| PANORO APURIMAC S.A. | | | | | |
| COTABAMBAS PROJECT-APURIMAC PERU | | | | | |
| LITHOLOGY SECTION | | | | SHEET | |
| LINE 8E | | | | 28R | |
| CHECK | CAD | Scale | Date: | | Scale |
| | ED | 1:5000.0 | 05/04/12 | | 1:5000.0 |



LITHOLOGY

| | |
|-----|----------------------------|
| DIO | Diorite |
| AND | Andesite |
| QMP | Quartz Monzonite Main |
| QMS | Quartz Monzonite Secondary |
| MNZ | Monzonite |
| LAT | Latite |
| COV | Coluvial |
| CLZ | Limestone |
| GRD | Granodiorite |
| QPZ | Quartz Porphyry |



| | | | | | |
|----------------------------------|-----|----------|----------|--------------|----------|
| PANORO APURIMAC S.A. | | | | | |
| COTABAMBAS PROJECT-APURIMAC PERU | | | | | |
| LITHOLOGY SECTION | | | | SHEET | |
| LINE 9E | | | | 28R | |
| CHECK | GAD | Scale | Date: | | Scale |
| | ED | 1:5000.0 | 05/04/12 | | 1:5000.0 |